

PERFORATE™

Metal Finishes



Finishes

Perforate is not constrained by standard finishes. Our system is designed to support custom colors, textures, and coatings efficiently – without the penalties of traditional custom fabrication.



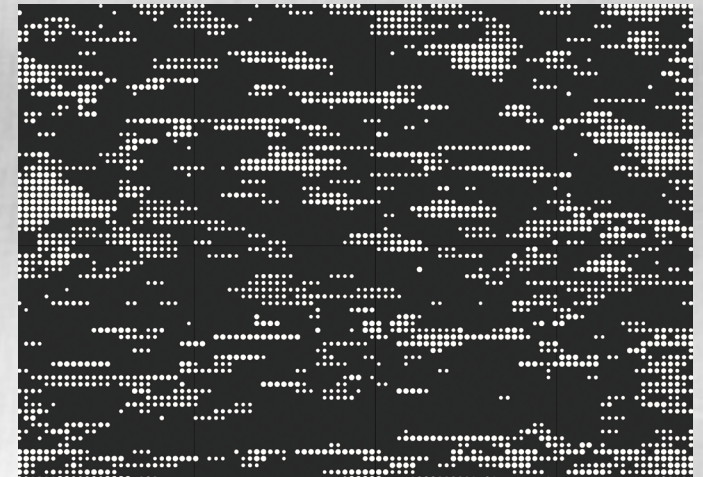
Powder Coat Finishes

Perforate systems are finished using commercial-grade powder coating – providing performance, color flexibility, and long-term durability

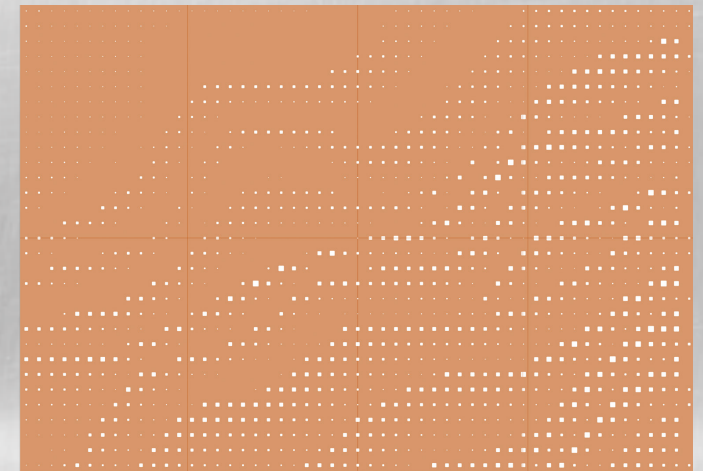
- AAMA 2603 / 2604 / 2605 compliant powder coatings
- Interior and exterior finish options
- Standard color sets
- Custom color matching available
- Commercial-grade, repeatable coating processes



Standard Colors



Black



Copper Ember

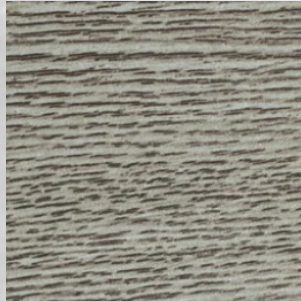
Wood Grains

The warmth and character of natural wood combined with the performance and durability of architectural metal

- Realistic wood grain appearance with subtle natural variation
- Durable metal construction with inherent fire performance
- Consistent finish with minimized visual repetition across panels
- Fully compatible with Perforate patterns, sizes, and integrations



Standard Wood Grains



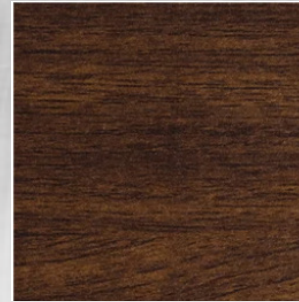
Weathered
Ash



Charcoal
Driftwood



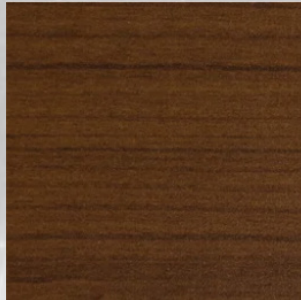
Warm
Pecan



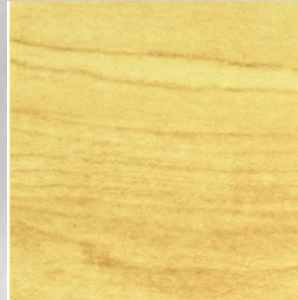
Dark
Walnut



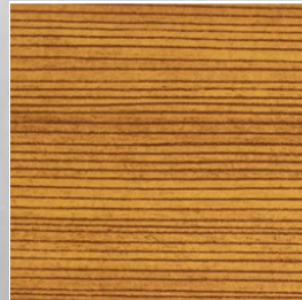
Smoked
Walnut



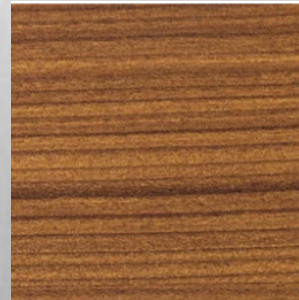
Espresso
Oak



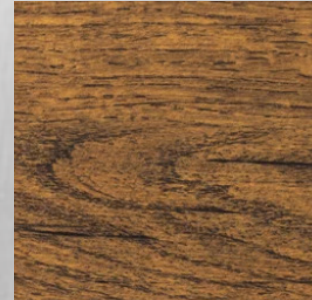
Natural
Maple



Douglas
Fir



Amber
Teak

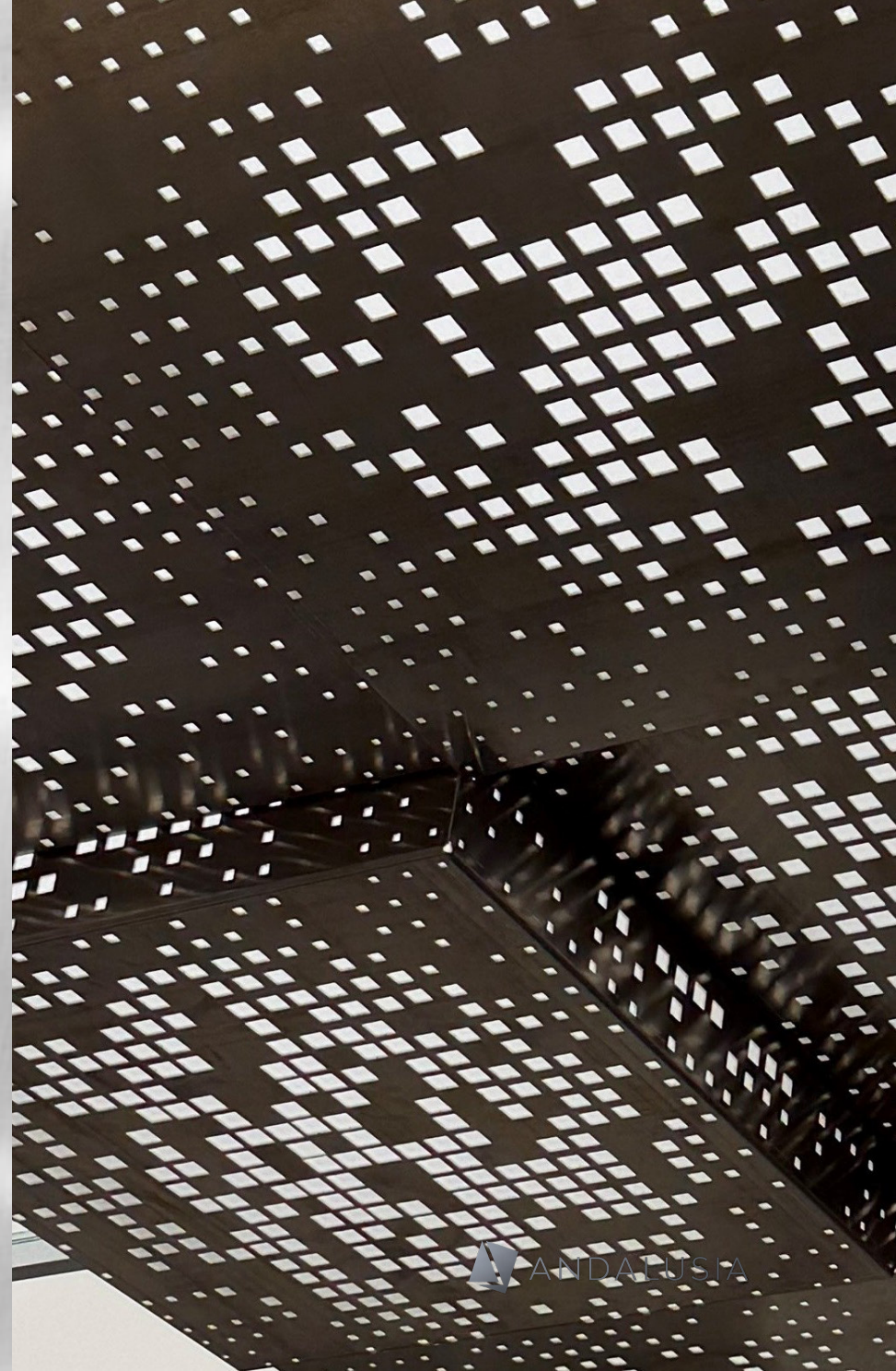


Aged
Oak

Specialty Metallics

Visually rich metallic finishes that emulate aged, rustic, and specialty metal surfaces, delivered on a lightweight aluminum substrate

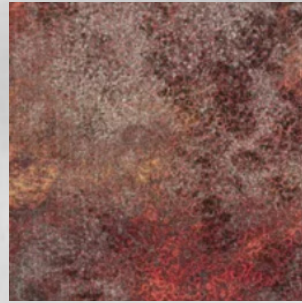
- Aged and specialty metal visuals with rich depth and character
- Lightweight aluminum substrate ensures durability and stability
- Consistent finish with subtle variation to reduce repetition
- Fully compatible with Perforate patterns, sizes, and integrations



Standard Metallics



Charcoal
Patina



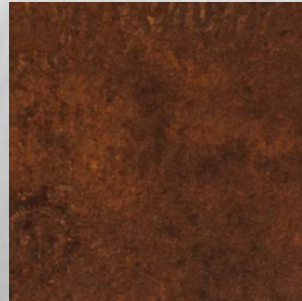
Oxidized
Ironwood



Copper
Oxide



Burnished
Ember



Oaken
Patina



Carbon
Black

© Andalusia Design – 2026

HIGH DESIGN MEETS DIGITAL FABRICATION



andalusia.design